

Reinventing a Traditional Farm for the 20th Century

James Rebanks











**Family farms are
wonderful**

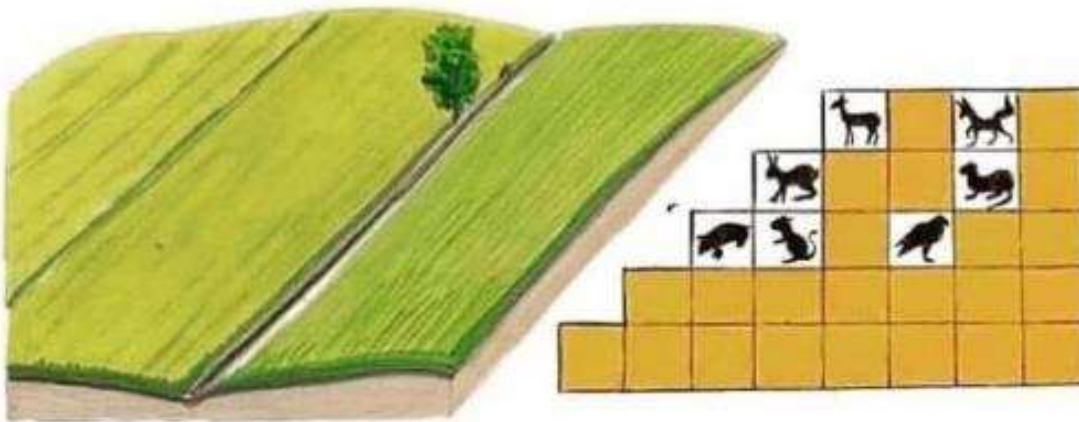
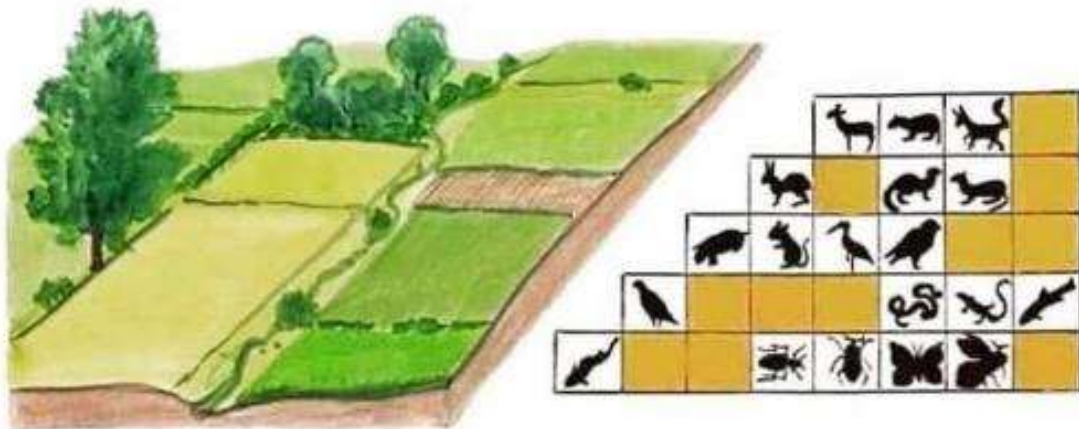
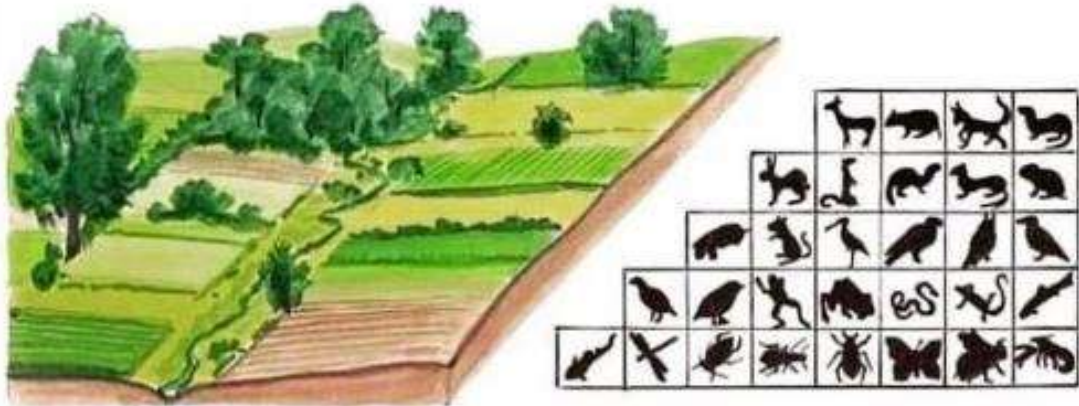
**They can also be toxic, don't
get trapped in one**

**Stop acting like your
job is to live your
dad's life**

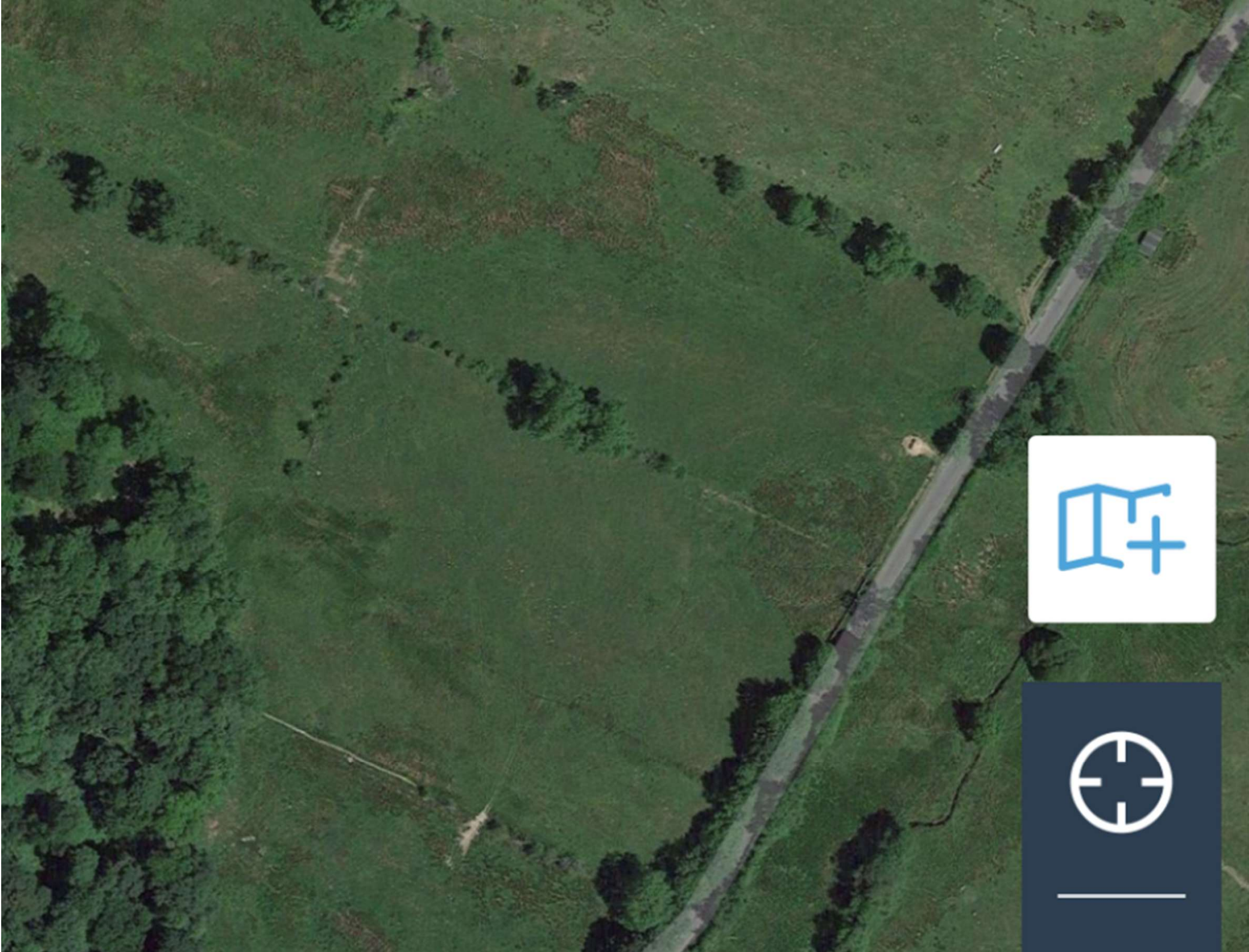
Its not 1975 anymore



**Work ethic and love
doesn't replace
clear thinking**







**Could we rebuild
ecosystems that work
and farm in them?**

What would that look like?

How would we do it?













**We were obsessed
with the edges**



The **FIELDS**

Simple things YOU can do...

1. Mob up
2. Longer covers – carbon flow
3. Trample
4. Increase diversity - hay
5. Buy a reel/move
6. Pilot one field













FAULT FINDER

GALLAGHER

0.0
UJA
0.0 kV



**Livestock work for
you – not the other
way around**











Map Legend

- 3 annual grazing events
- 2 annual grazing events
- 1 annual grazing event
- Non-grazed areas
- Grazing Cells - Electric fencing lines

Calculating Cell Grazing

To calculate the days of grazing for an individual cell, the cow day number should be divided by the number of annual grazing events allowed on that cell, and then divided by the actual herd size of cattle being used.

e.g. $200 \text{ (cow days)} \div 2 \text{ (grazing events)} \div 20 \text{ (herd number)} = 5 \text{ days in the cell}$

Grazing Principles

- Hardy native-breed Cattle only
- No grazing between 1st April and 20th July
- Mob style grazing on the smaller cells
- Extensive grazing on the wood pasture
- Higher stocking rate on the red cells (max 0.7Lu/ha/Yr)
- Lower stocking rate on the yellow and green cells (max 0.35Lu/ha/Yr)
- Small cells typically grazed 2-7 days per grazing event.
- 75 days to grow winter stockpile
- Quicker moves between cells in periods of wet weather to avoid poaching
- Some cells can be under utilised to retain more biomass and sward structure



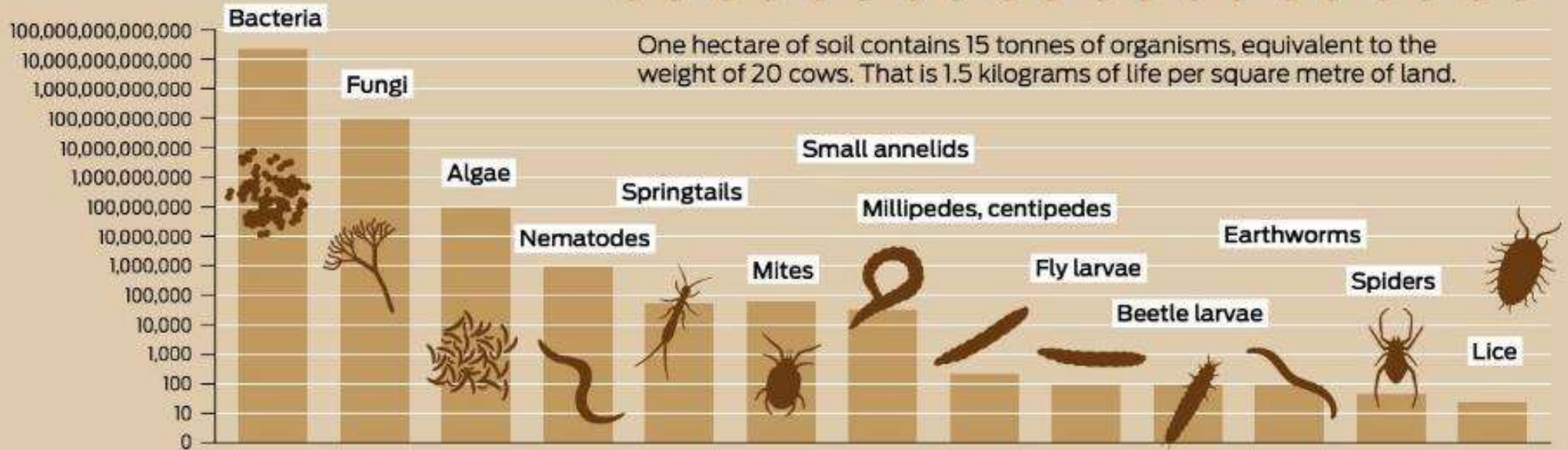


SIMPLIFIED ECOLOGICAL PYRAMID



TEEMING SOILS

Number of living organisms in 1 cubic metre of topsoil in temperate climates, logarithmic scale









**We are in the land
mending business**



**We sell... grass genetics,
breeding stock, meat,
education, habitat
restoration, conservation
grazing, beauty, wool,
and books**













Thank you